

## Errata

**ISBN:** 978 1 76031 597 9

**Title:** CHCMHS001 Work with people with mental health issues

**Affected edition:** Version 1.1 November 2015

**Page number:** 82

| Attachments   |
|---|
| NEW p. 82: CHCMHS001 Work with people with mental health issues |

**Please use the attached page to replace erroneous page in the above resource.**

Aspire Learning Resources

**Example**

**Basic file notes**

29/10/2015

Ming attended an appointment at the office. Her mother drove her. She stated she was feeling miserable, is having trouble getting out of bed in the morning and that her sister is annoying her. Her demeanour was very flat and her speech slow.

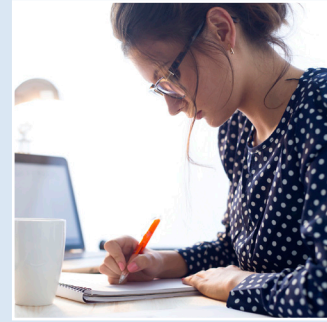
5/11/2015

Discussed with Ming my conversation with TAFE about art courses available next term. Ming was interested in the drawing course but we agreed we should discuss this again at our next meeting as Ming was struggling to concentrate.

Ming has an appointment with Dr Flynn tomorrow.

Meeting cut short as Ming wanted to return home to sleep.

Follow up – phone Ming in three days to touch base and at next appointment discuss drawing classes.



## Practice task 13

1. What are subjective comments and why are they not used in reports on people with mental illness?

---

---

---

---

2. Give two other rules about case notes and recording information on people with mental health needs.

---

---

---

---

3. What legislation and standards outline and provide guidance for the storage, security and access of personal health information?

---

---